

FLARE 2KSDI



Small and Mighty

2KSDI



With its thick milled aluminum case, the 2KSDI is built tough. To prevent points of failure, the camera has no knobs or buttons on the case itself. Though it is usually needed for operation of other pro mini-cameras, the 2KSDI does not require a camera control unit. The camera can be controlled via handheld remote, serial connection, or can be set into autonomous operation. These features work together to accomplish maximum usability in a minimal size.



No CCU Required:

Enable the OSD overlay on the 1st output using the optional handheld remote. The 2nd output stays clean for applications where a separate feed without OSD is needed.

Mount it Anywhere:
Centered mounting points surround 4 sides of the camera body. This design allows for the mounting of the camera from any angle.



Specifications

2KSDI

Imaging

Sensor Type

- Electronic Global Shutter CMOS

Active Sensor Area

- 2/3" , 11.264 x 5.94 mm, 5.5µm square pixels

Image Type

- 4:2:2 (YCbCr), 4:4:4 (RGB), RAW (Bayer)

Color Control

- Full color matrix, with RGB offsets and saturation
- Automatic white balance
- Tracking white balance with adjustable speeds

Luma Control

- Separate full gamma, black gamma adjustment
- Master pedestal level offset
- White clipping offset with adjustable knee function

Exposure Control

- Shutter angle (in 1/8th degree increments)
- Fractional shutter time
- Fine tune mode (microseconds)

Control Interface

- RS-485 up to 300m
- Handheld remote, OSD on SDI1
- Open command set, PC control software

Synchronization

- Reference input BNC connector
- 3G/HD-SDI modes require Tri-Level reference input

Output

HD-SDI Output Modes

- | | |
|--------------------------|--------------------------|
| • 720p 10bit 4:2:2/RAW: | 50, 59.94, 60 |
| • 1080p 10bit 4:2:2/RAW: | 23.98, 24, 25, 29.97, 30 |
| • 1080i 10bit 4:2:2/RAW: | 50, 59.94, 60 |
| • 2K 10bit 4:2:2/RAW: | 23.98, 24, 25, 29.97, 30 |

3G-SDI Output Modes

- | | |
|--------------------------|--------------------------|
| • 1080p 10bit 4:2:2/RAW: | 50, 59.94, 60 |
| • 1080p 10bit 4:4:4: | 23.98, 24, 25, 29.97, 30 |
| • 2K 10bit 4:2:2/RAW: | 47.95, 48, 50, 59.94, 60 |
| • 2K 10bit 4:4:4: | 23.98, 24, 25, 29.97, 30 |

Mechanical/Electrical

Housing




- Size: 63.5 x 63.5 x 44.1 mm
- Weight: 310g
- Material: Milled aluminum

Power Requirements

- AC Range: 100 - 240VAC (using AC adapter)
- DC Range: 10 - 19VDC (on power Hirose)
- Consumption: 4.5W maximum

Lens Selection

Image Crop at Different Resolutions

Resolution	Image Diameter	Lens Format
2048 x 1080	 12.7mm	≥1 inch recommended
1920 x 1080	 12.1mm	≥1 inch recommended, or generous 2/3 inch
1280 x 720	 8.1mm	≥1/2 inch recommended

Sensor Comparison

35mm Full Frame

Super-35 Film

2KSDI

Format	Crop Factor
35mm Full Frame	3.15 : 1
Super-35 Film	2.25 : 1

Adapters for:

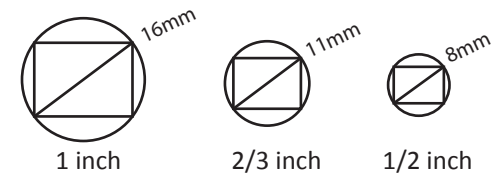
- Active EF/EF-S
- Passive F-mount
- B4-mount
- PL-mount
- Call for others

Native C-Mount Lens Adapter



The 2KSDI shown with the back-focus adjustable standard C-mount, which screws inside of an M42 threading.

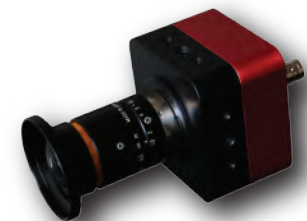
Standard C-Mount Lens Optical Formats



Shown with Fujinon lens using C-mount to B4 adapter



Shown with Zeiss lens using C-mount to EF/EF-S adapter



Shown with Kowa 5mm on native C-mount

Accessories

2KSDI

The 2KSDI Kit (P/N: 2KSDIKITxx)



P/N: 2KSDI
• Camera head



P/N: FLARESDIRMT
• Handheld remote
• Controls OSD



P/N: CABFLAREBATT
• Power/control cable
• Lemo, D-Tap, Hirose



P/N: ACPWRTAPxx
• AC-DC adapter
• xx = NA, EU, UK



P/N: CABUSB4852M
• 2m USB control cable
• Other lengths available

EF/EF-S Lens Control (P/N: FLARE2K-EFKIT)



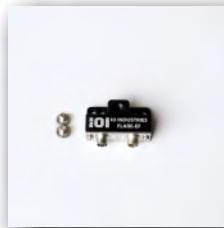
The 2KSDI is capable of controlling both focus and aperture functions on different manufacturers of EF/EF-S lenses. The attached lens can be controlled through the RS485 connection to the camera, or using the handheld remote with OSD on SDI1 output.



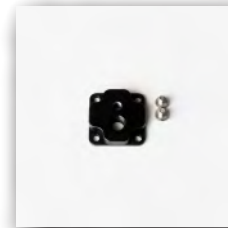
P/N: ADAPTER-C2EF
• C-mount adapter



P/N: CABFLAREBATT2
• Power/control cable



P/N: FLARE-EF
• Interface adapter



P/N: FLARE24MT-EF
• Tripod mount spacer

Other Accessories



P/N: CABLEMO3M
• 3m RS485 extender



P/N: FLAREPWRHR
• Power Hirose

